

NetLink FL Floor Mounted Network & Server Racks Series

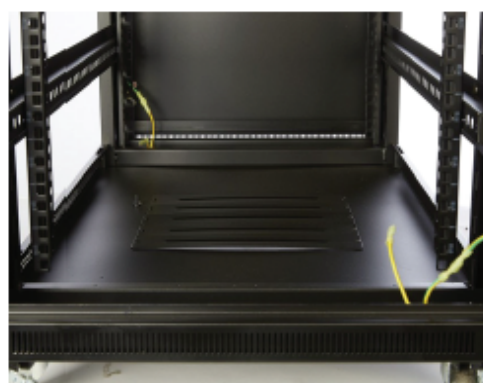
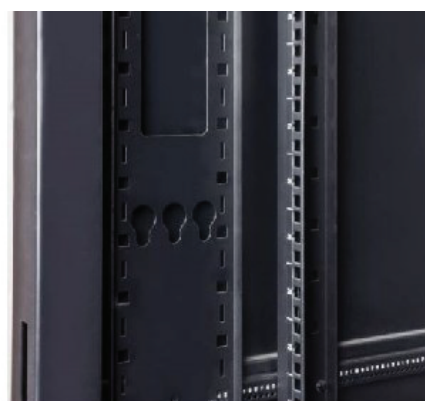
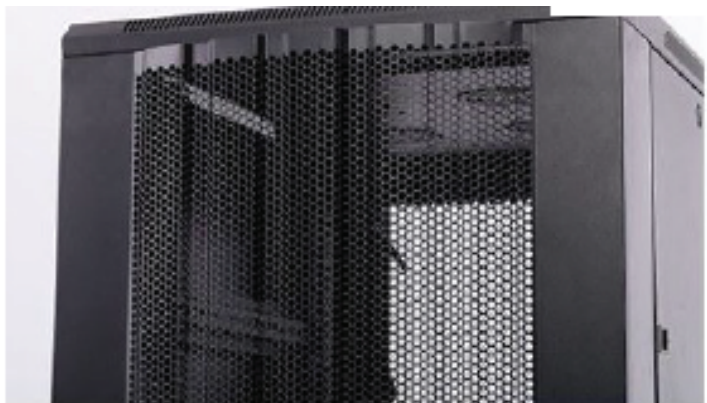
Have a modern, pleasing appearance and offer outstanding value



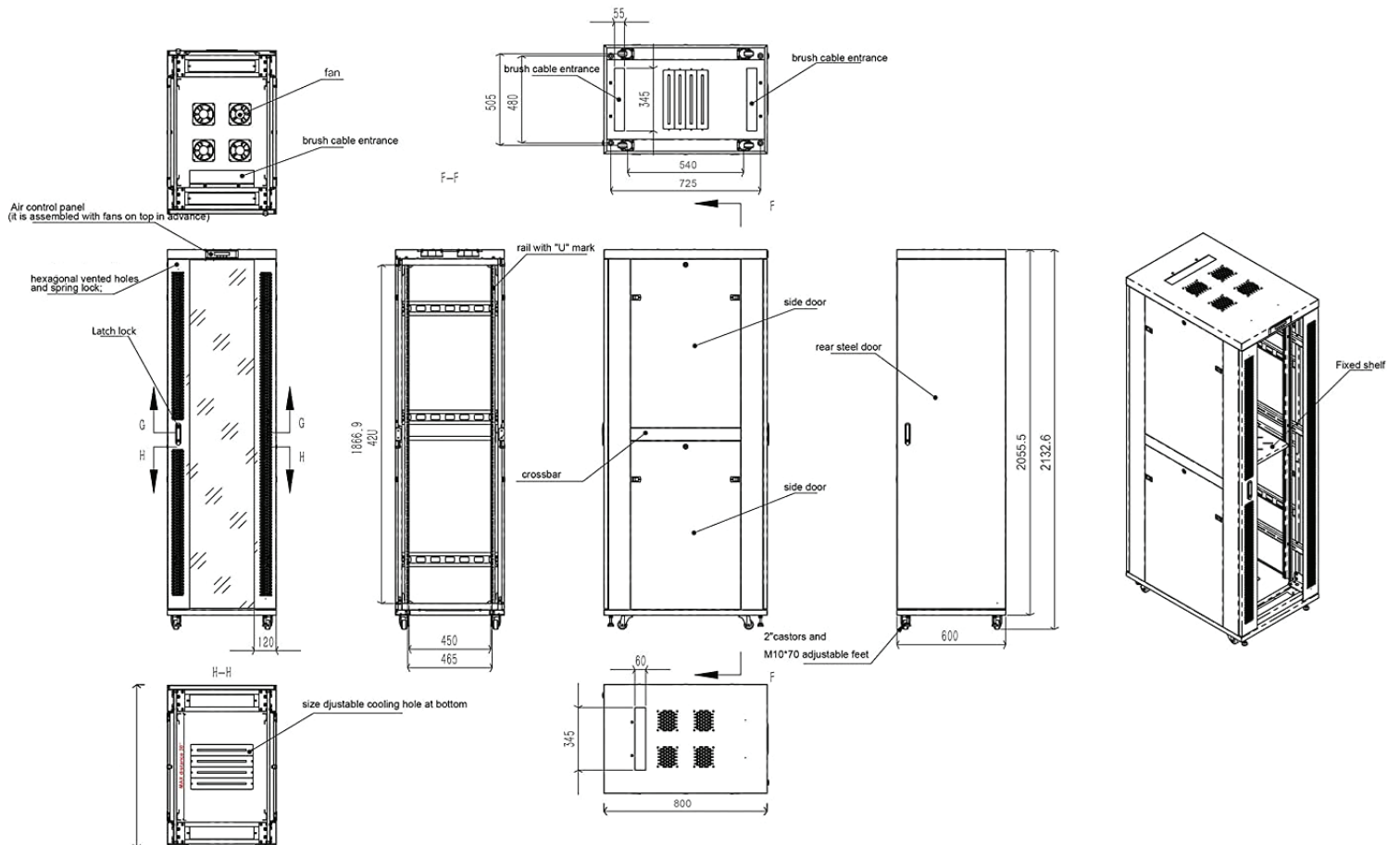
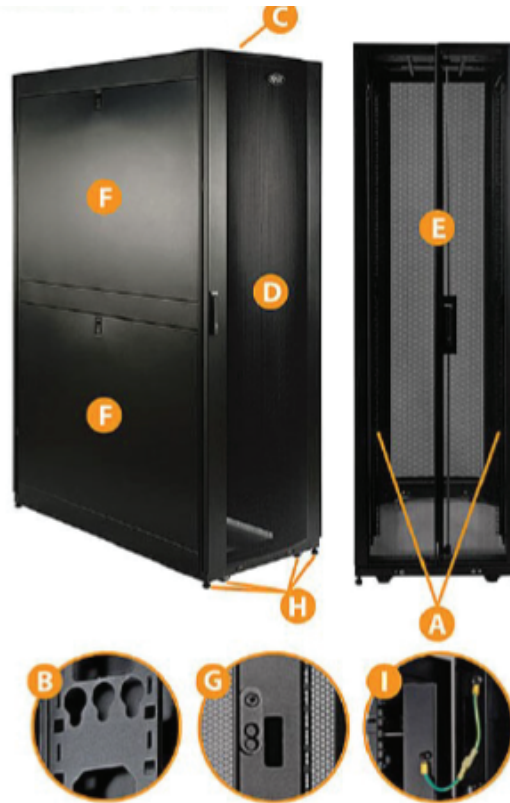
XCELL FL series Racks are a versatile range of 600mm or 750mm wide racks with features suitable for a wide range of high density server and equipment applications within the data, security, audio visual and telecommunications markets.

- Choice of doors available
- Choice of depths available
- Choice of colours available
- 19" profiles marked with U height position
- Removable and sliding infill floor base panel
- Strip cable entry in roof and base of rack
- 65 % ventilation on all doors
- Racks supplied assembled or flat packed
- Optional baying kit,
- levelling feet and lockable castors as standard

PRODUCT IMAGES

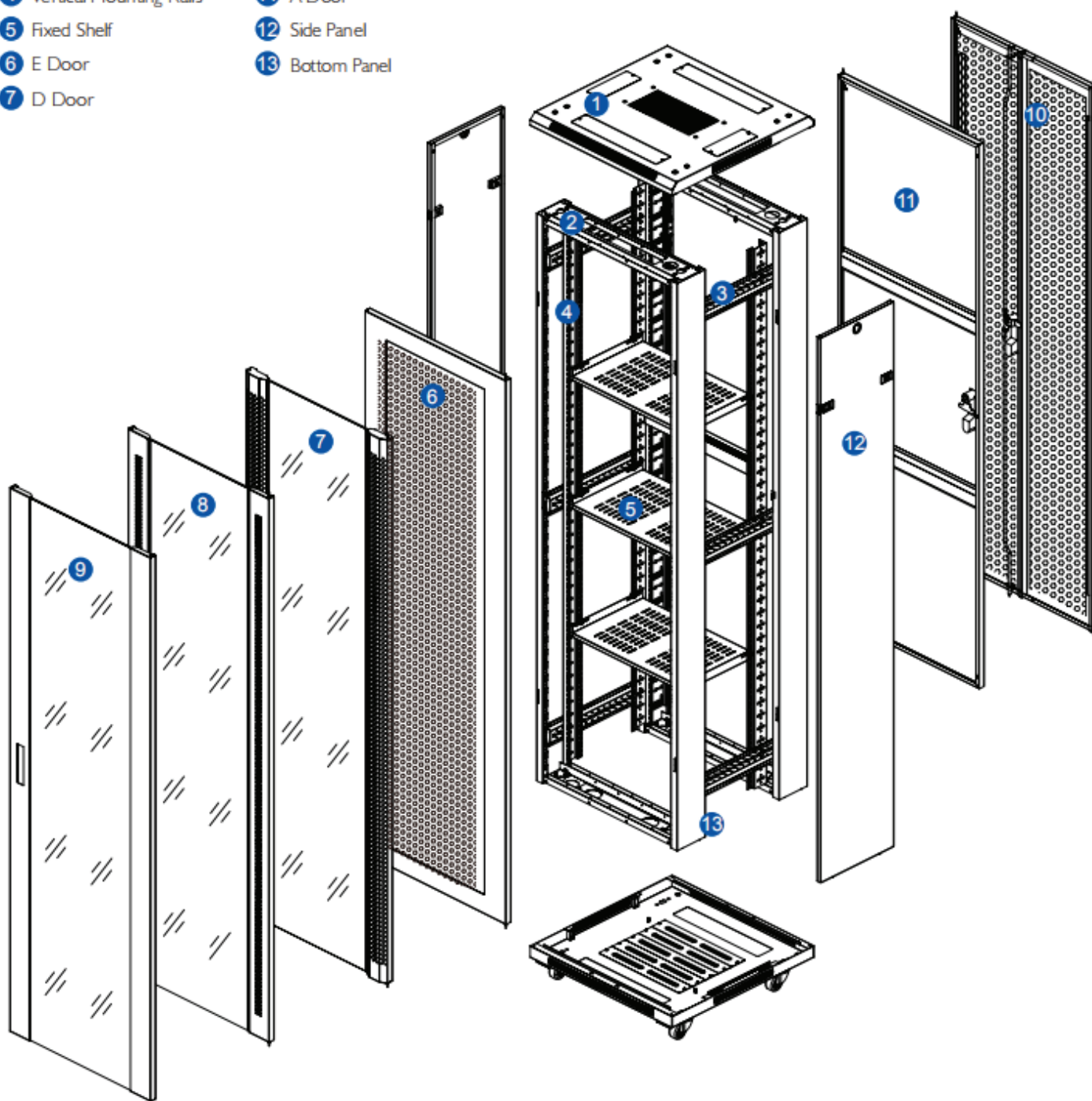


- A** Adjustable Mounting Rails (4) with Easy-View Depth Index
- B** Toolless Vertical Mounting for PDUs/Cable Managers
- C** Roof Panel (Removable)
- D** Front Door (Lockable/Removable)
- E** Split Rear Doors (Lockable/Removable)
- F** Modular Side Panels (Lockable/Removable)
- G** Bypassing Tabs
- H** Heavy-Duty Casters (4) and Levelers (4)
- I** Convenient Grounding System



EXPLODED VIEW

- | | |
|---------------------------|-----------------|
| 1 Top Panel | 8 C Door |
| 2 Frame | 9 B Door |
| 3 Mounting Beam | 10 F Door |
| 4 Vertical Mounting Rails | 11 A Door |
| 5 Fixed Shelf | 12 Side Panel |
| 6 E Door | 13 Bottom Panel |
| 7 D Door | |



SPECIFICATIONS

Color	Black or White - Powder Coated
Material	Zinc Coated Steel
Material Thickness	Mounting Profile: 2mm, 1.4mm, 1.0mm and 0.8mm
Doors	Glass or Mesh Single front door, Rear Solid Steel or double mesh doors, Opening Direction of door can be changed Side openable as two segment in each side
	Turning angle of front door is over 180 degrees
Removable Side Panels	Yes
Cooling Fans	4 fans located on top panel (Optional)
Adjustable Mounting Profile Installation	Yes
Assembly Required	Optional
Vertical Cable Management	Two Panels in rear side for 600mm Wide model Two Panels in read side and 75mm wide cable ways in front side for 750mm Wide model
Vertical Power Distribution Unites	IEC 13/19 type PDU, 16A-32A, 230V capacity (optional)
Loading Capacity	Maximum 1200Kg static
Cable Entries	Cable entry on both of top cover and bottom panel
Width	600 or 750mm
Capacity	21U to 45U
Product Dimensions	XX H, 600/750mmW, 800/1000/1100/1200mm D
Front Rail and Read Depth	Fully Adjustable Depth
Usable Mounting Dimensions	26U to 45U
ANSI/EIA	Yes
RS-310-D	Yes
IP Rating	IP20
RoHS	Yes
Reach	Yes
Package Quantity	1 - Floor Mounted Rack (Assembled)
Mounting Hardware	M6X12 screws & square nuts---10SET
Product Weight	92Kg- 126Kg

WARRANTY

Warranty	5 Year
----------	--------