

NetLink IP65 Grade 19 Inch Wall Mount Cabinet Series



600MM WIDE 455 SERIES IP65 OUTDOOR WALL MOUNTING

The 455 Series IP65 Outdoor Wall Mounting Cabinets are designed for industrial applications.

Based on EN60529 providing IP65 protection against dust and water ingress.

Applications include open areas subjected to falling dirt and wind blown dust particles, rain, splashing water.

Fully gasketed door, isolated cable entries provide protection against water and dust ingress. 1.5mm thick monoblock welded construction, with epoxy Polyester type powder coating to RAL 7035 Or Marine Paint, Light Grey color, providing corrosion resistance.

Fresh air inlets to the sides of the cabinet provide natural ventilation. By adding 1 Fan or 2 Fan Modules, forced ventilation can be achieved (Fans are Optional).

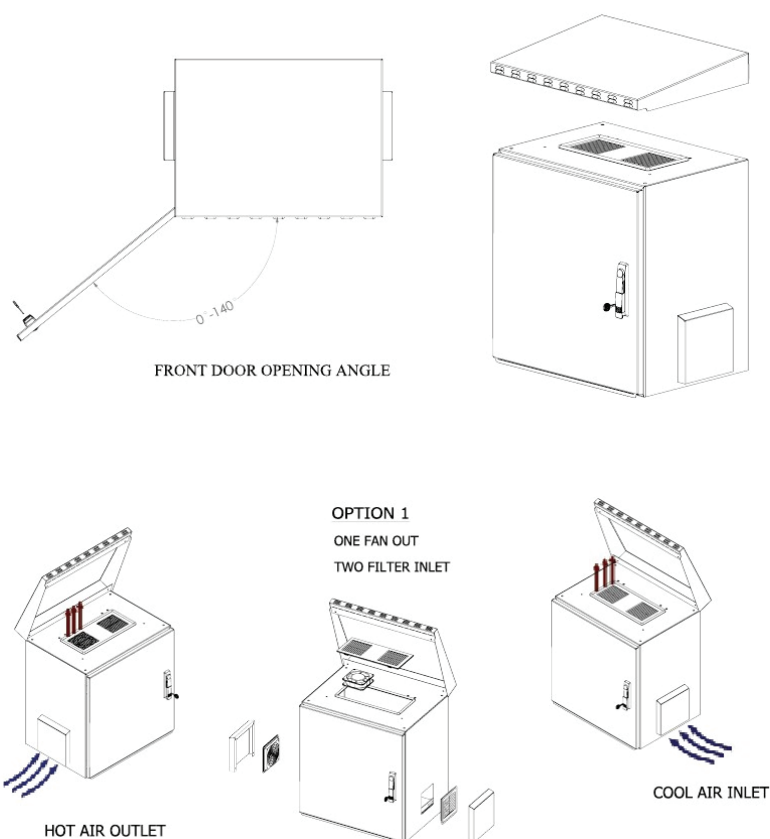


455 SERIES IP65 19" OUTDOOR WALL MOUNTING SERIES ENCLOSURES WIDTH 600MM AND DEPTH 450/600MM, IN 4 DIFFERENT 'U' HEIGHTS, GIVES A WIDE SELECTION FOR USERS.

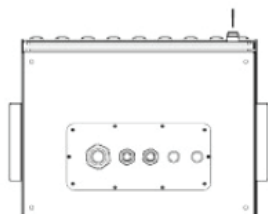


- Width = 600mm
- Depth = 450/600mm
- 5 different Standard U Heights
6U, 9U, 12U & 18U
- Load Capacity: 100kgs
- Standard colour: RAL 7035, Light Grey

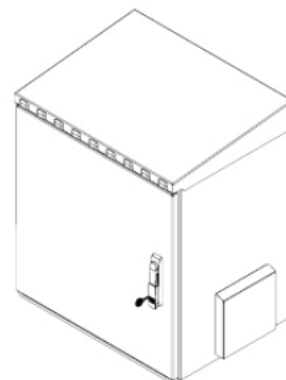
CONSTRUCTION DRAWING



DRAWING DETAILS



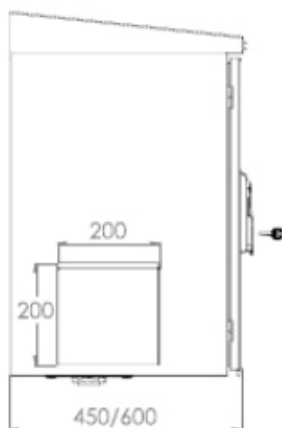
BOTTOM VIEW



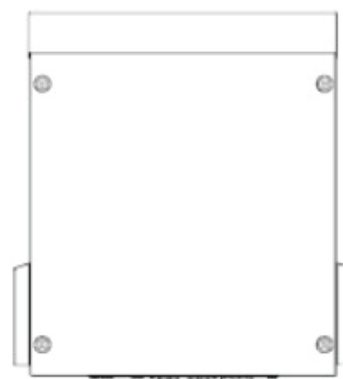
ISOMETRIC VIEW



FRONT VIEW



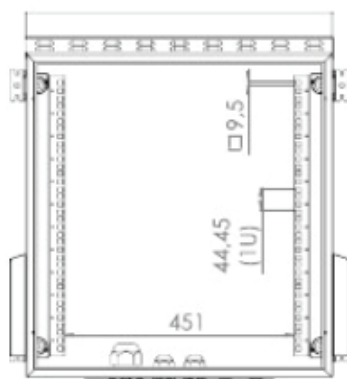
SIDE VIEW



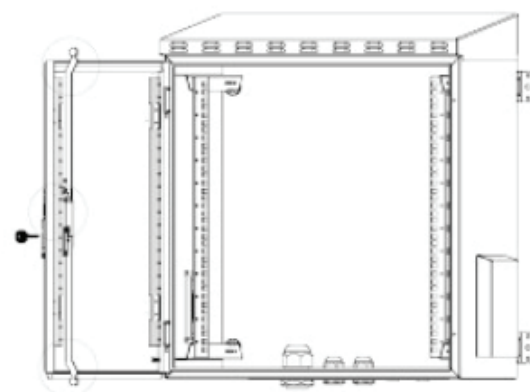
REAR VIEW



TOP VIEW



INSIDE VIEW



3 POINT LOCKING SYSTEM

WARRANTY

Warranty

5 Year