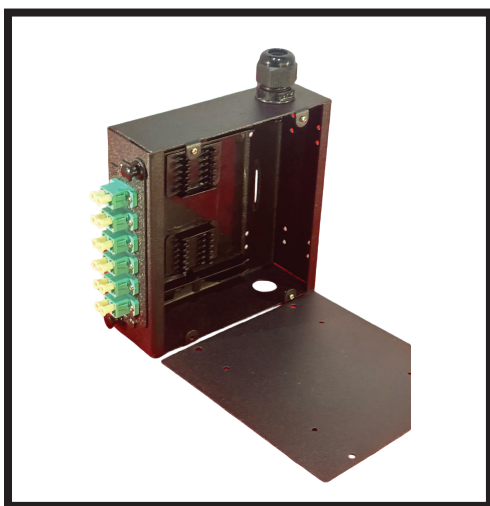


## DIN RAIL Mount, Load or Unload Patch Panel STP/UTP or Fiber SC/LC/FC



### DIN RAIL MOUNT PATCH PANEL

The XCELL range of Din rail mounted fiber optic and UTP/STP enclosures offer a strong and compact solution to provide an efficient way to establish connections between external cables and equipment inside the buildings and communications facilities.

Din Rail Mount Patch Panel Blank (Support SC Duplex, LC Duplex Adapters and STP/UTP) provides a convenient convergence point for interconnecting and/or splicing in wall mount applications. Robust steel construction ensures the highest level of protection for sensitive components while integrated roll formed hinges eliminate possible fiber pinch points, with multiple cable entry points. From Top and Bottom suit for your implementation. Cables can be spliced or pre-terminated.

LC Duplex 12 Ports Adapter option

SC Duplex 6 Ports Adapter option

UTP or STP 6 Modular Jack option

## FEATURES

Compact size perfect for limited space enclosures

Zinc coat steel housing with powder coating

Suitable for wall mount and surface mount applications (DIN Rail)

Patch of fusion splice field termination standard

Splice holder for pigtail splicing

Operating Temperature : 40C to 50C

Can be used as 24 Port Din Rail Patch Panel using 12 LC Duplex or 6 SC Duplex Adapters for Fiber Optic Termination 6 ports STP or UTP module jack for copper termination

## SPECIFICATIONS

Solid steel construction with 1mm Zinc coated steel

Powder coat black Semi mat finish

Top or bottom cable entry with dust resistant grommets

Single hasp locking / Security system

12 to 24 fibers patch and splice density for fiber models

Physical Dimensions : 132\*130\*43 mm

Colour : RAL 9005

